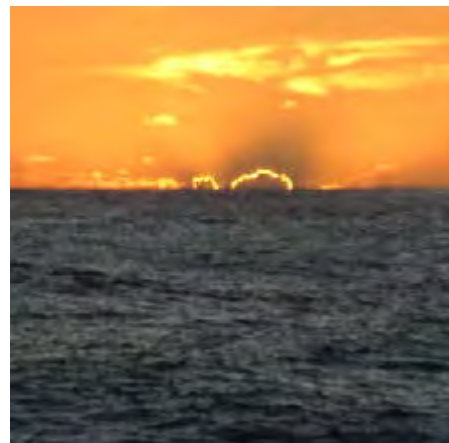


# Island Cruising NZ 2019 Pacific Circuit Rally



## Information Pack 3





*Pacific Circuit Rally*

Welcome Aboard!

During the months leading up to the start of the Pacific Circuit Rally we will provide you with a wide range of information regarding the preparation of your vessel, crew, and arrangements for your forthcoming blue water voyage to the South Pacific. Understandably the information tends to be repetitive from year to year as it is primarily produced to be of assistance to those rally entrants who are preparing to undertake their, or their vessel's, first offshore international voyage, but there will also be a lot of information necessary for the smooth running of the event. Please read all information packs with care and, please, if you have any queries or questions, Please ASK, we are here to help.

Departure is from Opua in New Zealand's far North. Plan to be there a little early and enjoy some magic cruising in this beautiful area. Opua is also well serviced with marine suppliers and contractors so if anything does break on your shakedown trip, don't stress. Our leaving date is programmed for the 20th of May but this is weather dependent. There are plenty of great things to see and do (as well as all those last minute jobs) in and around Opua. **Don't forget to book your marina berth to take advantage of the 20% discount shown in Information Pack 1.**

We, like everyone else I am sure, are slowly ticking off the jobs and maintenance that needs completing on Varekai before our departure. Need more hours in the day sometimes.....and more days in the month!!!!!! As I write this it is 2 months until we meet in Opua for the start of pre departure week. So lots still to do, but progress being made. Great to see some more faces on the rally Facebook page so if you have not introduced yourself on there already, please do.

Kind Regards

**Nigel & Amanda Richards  
ISLAND CRUISING NZ**

+64 (0)21 02242490 Nigel  
+64 (0)21 02242498 Amanda

[www.islandcruising.co.nz](http://www.islandcruising.co.nz)

Yacht 'Varekai'

Facebook: Island Cruising NZ

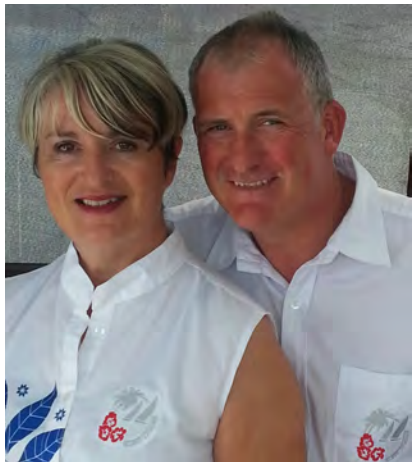
& 2019 Pacific Circuit Rally

Email: [amanda@islandcruising.nz](mailto:amanda@islandcruising.nz)

[nigel@islandcruising.nz](mailto:nigel@islandcruising.nz)



**Beach games at Ouvea,  
Loyalty Islands**



# 2019 PACIFIC CIRCUIT RALLY (PROVISIONAL) RALLY PROGRAMME

## Version 4

**ALL DATES ARE WEATHER DEPENDANT & SUBJECT TO  
CHANGE AS THE DETAILS EVOLVE**

By Sunday 12th MAY 2019

Muster at Opuia - Bay of Islands Marina or anchorage outside

Monday 13th MAY 2019

Pre-departure week activities commence

Monday 20th MAY 2019

Depart Opuia, New Zealand for Pangaimotu Island,  
Nuku'alofa, Tonga

29th - 31st MAY 2019

Fleet clearance Big Mama YC, Pangaimotu Island, Nuku'alofa

Saturday 1st JUNE 2019 (3rd June if delayed)

5 pm Welcome Dinner, Band & Local dancers

Wednesday 5th JUNE 2019 latest

Depart Nuku'alofa for Ha'apai chain

Monday 10th JUNE 2019

Pot luck lunch & beach games, probably Uoleva Island

Friday 14th JUNE 2019

Depart Ha'apai group for Vava'u islands

Saturday 22nd JUNE 2019

5pm Mango Cafe, Neiafu - Farewell Tonga eve

Monday 24th JUNE 2019

**Fleet 1** depart Neiafu, Tonga for Vanua Balavu, Fiji

Wednesday 26th JUNE 2019

**Fleet 2** depart Neiafu, Tonga for Vanua Balavu, Fiji

Wednesday 26th JUNE 2019

**Fleet 1** Clearance commences Vanua Balavu

Friday 28th June 2019

**Fleet 2** Clearance commences Vanua Balavu

JULY & AUGUST 2019

Explore Lau group or Eastern districts

Explore Western districts

Musket Cove fun & games

11th AUGUST 2019

Arrive Vuda Marina - Farewell Fiji event

13TH AUGUST 2019

Depart Vuda Marina for Vanuatu

17th/18th AUGUST 2019

Clearance Aneityum & Village tour

Fleet 1 to Tanna/ Then Fleet 2 to Tanna

Port Vila, Efate

Explore northern Vanuatu

16TH or 17th SEPTEMBER 2019

Depart Port Vila, Vanuatu for Lifou, Loyalty Islands,

19TH SEPTEMBER 2019

Clearance into Lifou, Loyalty Islands, New Caledonia

20TH SEPTEMBER 2019

Welcome feast and local weaving demonstrations

Explore Loyalty Islands, eastern Le Grand Terre

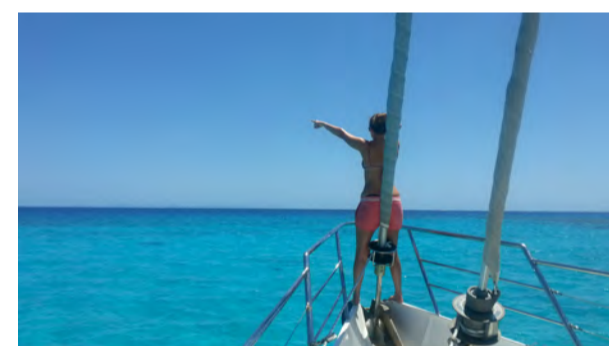
Isle de Pins, Southern Lagoon & southern Le Grand Terre

Muster Noumea for farewell party

LATE OCTOBER

Depart Noumea for Opuia, New Zealand

Arrival party - Opuia





# 2019 Pacific Circuit Rally Pre-departure week activities

12th to 20th May 2019



*Please note that times may be subject to change*

<b>Sun</b> 12th May 2019	All Boats should arrive in Marina or the anchorage outside	Opua, Bay of Islands
<b>Mon</b> 13th May 2019	<b>1000 hrs</b> Introductions and collection of Rally Packs	Opua Cruising Club
	<b>1100 hrs</b> Kids fun hour	
	<b>1700 hrs</b> Mingle with your fellow cruisers	Opua Cruising Club
<b>Tues</b> 14th May 2019	<b>0830 hrs</b> ICNZ Radio Sked	VHF CH 08
	<b>1000 hrs</b> Paddleboard safety by Scotty & Jo (SUP Bro)	Opua Cruising Club
	<b>1500 hrs</b> Completion of NZ Departure Form C2B, Tonga & Fiji arrival forms	Opua Cruising Club
	<b>1530 Hrs</b> Peter Mott Northland Radio	""
<b>Weds</b> 15th May 2019	<b>0500 hrs</b> Bread baking demo + Free coffee!!	Opua General Store
	<b>0830 hrs</b> ICNZ Radio Sked	VHF CH 08
	<b>1000 hrs</b> Kids fun hour	
	<b>1400 hrs</b> Iridium Comms Self Help workshop	Opua Cruising Club
	<b>1530 hrs</b> Sail South Pacific apps Demo & downloads	""

<b>Thurs</b> 16th May 2019	<b>0830 hrs</b> ICNZ Radio Sked	VHF CH 08
	<b>1430 hrs</b> Fishing tips from Burnsco	
	<b>1530 hrs</b> Passage Planning, Weather & position reporting BOI Marina farewell function	OCC ""
<b>Fri</b> 17th May 2019	<b>0830 hrs</b> ICNZ Radio Sked	VHF CH 08
	<b>1400 hrs</b> Kids fun hour	
	<b>1500 hrs</b> Tonga - local info, Chart marking, events	OCC
	<b>1600 hrs</b> Weather briefing <b>1700 hrs</b> Meet up	""
<b>Sat</b> 18th May 2018	<b>0830 hrs</b> ICNZ Radio Sked	VHF CH 08
	<b>1530 hrs</b> Ladies hour	OCC
	<b>Churchills, groceries delivery ??</b>	
<b>Sun</b> 19th May 2019	<b>0900 hrs</b> ICNZ Radio Sked	VHF CH 08
	<b>0930 hrs</b> Group photo	Boardwalk by carvings
	<b>1000 hrs</b> Kids fun hour	
<b>Mon</b> 20th May 2019	<b>0830 Hrs</b> ICNZ Radio Sked	VHF CH 08
	<b>0900 hrs</b> Customs Clearance commences	O/S Customs Office

## Provisioning

What to take and how much, that is the question?

Our first stop in Nuku'alofa, Tonga, will have some but limited types of fresh produce at the market. There is a reasonable supermarket just out of town and, if available, we will arrange a bus trip there for ease of travel.

Ha'apai area also has very limited fresh supplies. There are a couple of small grocery stores in Pangai. The Fresh Food Market in Neiafu, Vava'u has reasonable choice, a couple of small supermarkets and a little bakery selling daily fresh bread.

From there we travel to the remote Lau group of Fiji where the word Supermarket is all but unknown. It would be our recommendation to provision from Opuia for the long haul as far as Lautoka in Fiji a period of up to 2 months. While fresh will be available as far as Vanua Balavu the Southern Lau have limited resources and we would prefer our fleet didn't strip the locals of food they would otherwise be growing for themselves. Lautoka & Nadi have good supermarkets and great fresh produce markets.

Be prepared to do some trading in Vanuatu for fresh fruit & veg. Tinned goods, water, clothing, fishing hooks, rope; all things that the locals will be very happy to trade for in all the islands apart from Port Vila, Efate, Vanuatu where they have great supermarkets and a 24 hr fresh produce market! Duty free alcohol, the cheapest you will find, will be available on our departure to New Caledonia.

New Caledonia: once you arrive in Noumea you will be in French patisserie, cheese & wine heaven!! Great supermarkets and a daily fresh market. Like any large French town but dropped into the middle of the South Pacific with plenty of choice & shops!! On our arrival into the Loyalty Islands we will arrange a bus into the main town of We (pronounced WAY) so everyone can re-provision at the supermarket easily. Between there and Noumea you will find some small stores stocking essential items although quite expensive.

Make sure you have all the consumables you'll need for oil changes etc and plenty of spare parts.

An Easiyo yoghurt maker is a great item to have on board. Buy the sachets before you go though as they are about triple the cost of New Zealand! Sodastream is another item that helps eliminate some plastic waste. You will not be able to refill the cylinders whilst you are away though. Buy the concentrates and cylinders from places such as Briscoes when on special offer. We have been told that 5 gas cylinders should last you the whole Pacific Circuit rally depending on your consumption of course!!

We would encourage the use of eco friendly products made by companies like Ecostore to minimise our impact on the environment where possible.



## Provisioning in Opuia - Food, Wine & Beer:

We have been working with David Whyman from Nosh/Four Square who **will be assisting you in receiving your groceries at GST free prices, including wine & beer through an online shopping facility with Pak N Save Kaitiaia. You will be able to pre-order once this facility is set up for delivery during pre-departure week at Opuia.** When you are faced with provisioning for a couple of months this is essentially a huge saving in cost so get prepared with your list of what you will need to order.

Liquor: We are currently working with Thirsty Liquor in Paihia to set up duty free liquor for you. More details will follow when known.

Export quality meat: Churchills Kerikeri will be able to supply export quality vacuum packed meat delivered frozen at GST free prices. You will be able to pre-order. Although meat will be available with the Pak N Save facility any meat taken into New Caledonia may be seized that is not labelled with its source of origin and only New Zealand meat and Vanuatu certified beef is allowed.

## Duty free Diesel before departure

The Bay of Islands marina has a diesel fuel jetty just below the overlooking Opuia Cruising Club by the entrance. Rally participants will be allowed to fuel up in the days prior to departure. We will confirm which day this can commence nearer the time. You pay full price at the pump, keep your receipts and then the Marina office will refund the GST on presentation of your receipts and clearance certificate copy on your day of departure.





## Iridium GO and the PredictWind Offshore App are the recommended communication and weather tools

### Simpler, Faster and More Reliable - PredictWind Offshore App

This application from PredictWind for Mac and PC, iOS and Android has revolutionized accessing weather data when offshore. Accessing GRIB files, Weather Routing, GMDSS forecasts and Satellite Imagery is now a simple task with the unique and user friendly interface.

Selecting the weather information needed is now as simple as setting up your route, and the relevant GRIB files, Weather Routes, GMDSS text forecasts and Satellite Imagery are automatically selected. The complexities of requesting files via email have been automated and all file transfers are compressed in a BZ2 format.

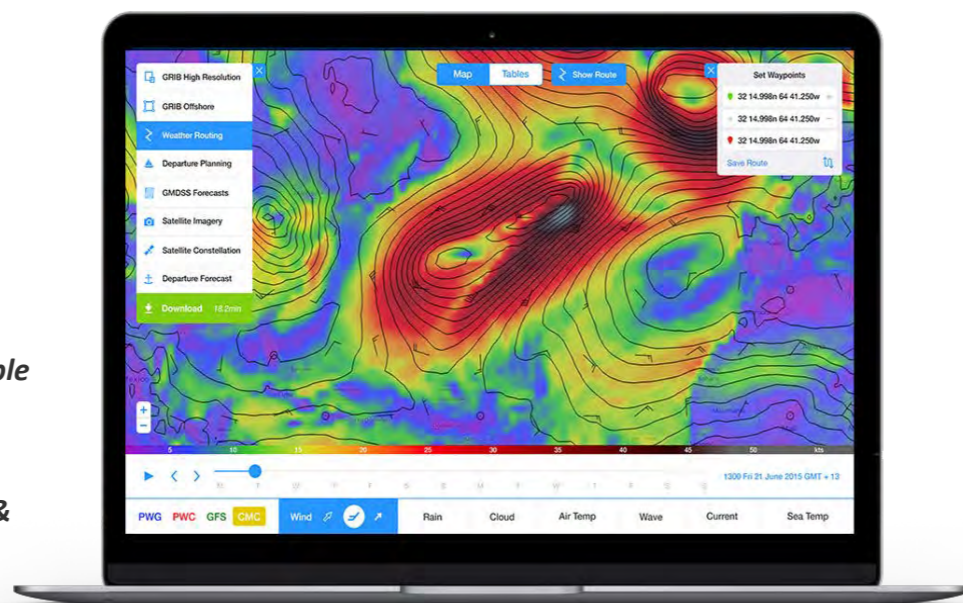
The Offshore App will work with existing satellite or SSB communications and has also been developed as an approved Iridium GO! application. When used in conjunction with the Iridium GO! the boat's position is automatically updated on the map. If the satellite connection is lost the auto resume feature restarts the download, saving connection time.

Iridium customers can see the Iridium constellation at any time, to check the optimal time for a voice or data connection.

The Offshore App can be used with a free account to download the Offshore GRIB files from PredictWind in addition to the GFS & ECMWF forecasts. A PredictWind Standard/Professional account unlocks the essential weather tools including high resolution GRIB files, Weather Routing, GMDSS text forecasts and Satellite Imagery.

#### Key Features:

- **Weather data auto selected from route**
- **Highly compressed files**
- **Automatic download resume**
- **Auto generate email requests**
- **Satellite or SSB connection compatible**
- **Iridium GO! interface**
- **Top 4 weather models - PWC/PWG & CMC/GFS**



PredictWind has combined the world's leading forecasts and tools, in an App, that will make getting weather data via a Satellite or SSB communication incredibly easy.

Find out more or download the Offshore Application free of charge

<http://www.predictwind.com/grib-files/>

This Screen shot shows the PWG and PWE weather routes on this tab with the GFS and ECMWF forecasts also available. From the tabs on the footer; Route, Swell and Current info and now CAPE is also available.

Faster download speeds and better speech quality with the latest **Firmware update of 1.5.2** using Iridium Next satellites.

## AIS

The Vesper XB-8000 AIS Transponder has WiFi, NMEA 2000® & 0183, USB and GPS receiver all built right in and includes our powerful external GPS antenna.

The world's first Class B AIS with built-in WiFi and NMEA 2000 gateway converting navigation instrument data so it can be viewed on most any tablet, smartphone, PC or Mac. It is the most full-featured Class B AIS "black box" transponder and is the only AIS transponder that can be used as a GPS source for NMEA 2000 networks. This AIS transponder is a unique Class B AIS transponder with WiFi allowing navigation information to be viewed from anywhere on your boat. Mounting the XB-8000 is made easy with innovative cable connection points that create neat low profile installations.

The XB-8000 WiFi can securely connect up to 5 other devices simultaneously. You can have a wireless connection to your laptop, smart phone and tablet - all simultaneously! And for even larger networks, you can wirelessly connect the XB-8000 to an external WiFi router for unlimited expansion capability.

Vesper Marine AIS transponders are the only AIS with a fast 5Hz GPS update rate providing greater detail and higher resolution plotting resulting in smooth tracking on chart plotters, MFD's and mobile apps. **AIS Man Overboard (MOB) alarm** A true safety device, the XB-8000 is the only "black box" AIS transponder with an AIS Man Overboard (MOB) alarm. Simply connect an **external alarm** to your XB-8000, equip your crewmembers with any manufacturer's AIS MOB device, and you'll be immediately alerted if someone falls overboard. No other devices need to be connected or switched on. The XB-8000 silently and continuously watches for an MOB and sounds the alarm as soon as it detects one.

[Anchor Watch](#) can enhance your safety:

The XB-8000 is a "black box" AIS that includes an Anchor Watch.

When you drop anchor, activate it using your smartphone, or a physical switch and the XB-8000 sounds the alarm if you are outside a circular zone configured around your anchor position. Monitor your position remotely from Android and Apple device using the free WatchMate app. If your mobile device is powered off or the app is closed, the XB-8000 anchor watch continues to monitor the situation and sound the alarm to warn you.



#### AIS information from Anywhere with XB-8000

A safety instrument with unprecedented accessibility



Build on the years of experience Vesper Marine has with our unique and award winning AIS technologies.

The easiest way to integrate AIS with consumer mobile devices

The XB-8000 AIS safety data can be accessed wirelessly with mobile devices running applications such as iNavX, SEAIq, NavPlay and others.

- An AIS transponder with fully integrated internal WiFi
- As many as five devices connected via WiFi at one time
- Can be configured as the WiFi host or client
- Supports standard 3<sup>rd</sup> party AIS applications
- External GPS antenna included
- NMEA-2000, NMEA-0183 and USB
- Translates NMEA 2000 instrument data to WiFi. Viewable on a wide variety of compatible apps
- Control from anywhere on the boat using an iPhone or iPad - wirelessly

## Iridium Go, SOS and GEOS

Below I have included the official response received to this request from RCCNZ last year, when the question was posed to them. Aboard Varekai our Iridium Go is set up for SOS via GEOS. My personal thinking is there would be insignificant delay in using the GEOS service to a genuine emergency. Also, if faced with a genuine emergency I would be operating my EPIRB and SOS key simultaneously, therefore guaranteeing that the recipients recognise the situation as genuine.

To learn more about programming the SOS function on the Iridium GO device & or the Iridium GO app go to:

<https://support.predictwind.com/hc/en-us/articles/202717154-How-to-Set-Up-Unit-Make-Voice-Calls-Send-SMS-Messages-and-SOS-Set-Up->

To register with GEOS go to:

[https://www.geosalliance.net/geosalert/monitor\\_iridium.aspx](https://www.geosalliance.net/geosalert/monitor_iridium.aspx)



**Final design of the 2019 Pacific Circuit Rally battle flag sent for printing. You will be given your rally flag and Island Cruising NZ burgee to fly throughout please.**

# Pacific Passage Planning

The first step to "Getting There" is of course an ocean passage. There are a number of resources to help here but the basics are, PLANNING.

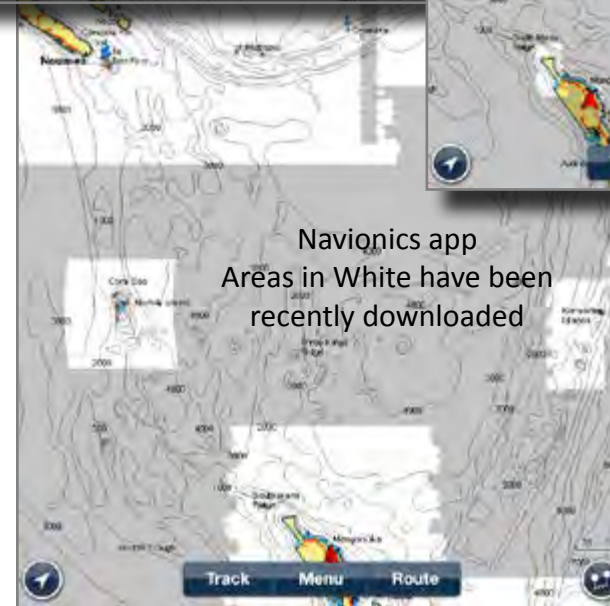
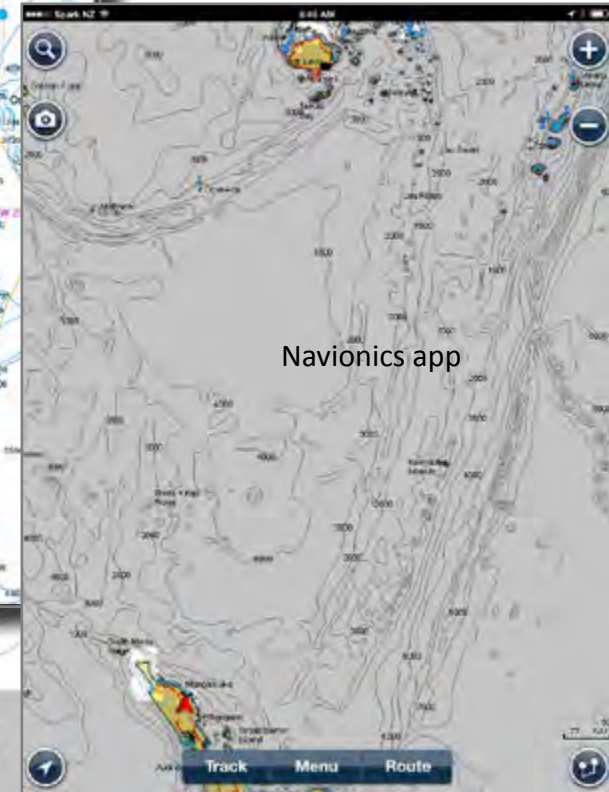
## Charting

Here are some i-Pad screen shots showing the difference between Raster charts (copies of the paper version) on Wartsila iSailor app (previously known as Transas I-sailor), and Vector charts (Navionics app). Both are composite electronic charts with layer information.

Much has been said lately with the very public grounding in the Volvo Race. Primarily because the navigator didn't zoom in far enough on the vector charts and the reef simply didn't appear. Note also on the Navionics app the charts need to be downloaded. The first chart is greyed out meaning either the chart has not been downloaded or there is an update available to download. The white areas are the newly downloaded charts for the SW Pacific and amount to around 100MB.

On the iSailor app screen shot Minerva and the Kermadecs are clearly shown yet on the Navionics Screen Shot it looks like clear ocean. We favour the iSailor Raster Charting and the projected route to Tonga, via Minerva is shown in red.

We always advise taking the Ocean and overall country charts in paper format as a backup to electronic charts.





# Safe Tropical Navigation

## OVITAL APP



Excerpt from *Navigating the Pacific despite the bad charts* A Zerotosixty post by Art, Feelin Good.

Once you decide to visit Fiji with your sailing yacht you begin to understand that the navigation charts you have trusted in most places of the world are way less useful here. Whether you are using charts on your navigation plotter from Navionics or Jeppesen, chart programs on the iPad, MaxSea, Open CPN, Admiralty paper charts or even the local charts you can buy here in Fiji... you soon realize they all are pretty terrible for anything outside the Nadi and Suva areas.

So Andrea, our skipper, decided the way to do it is to use as much data as we can, to make a good decision. We have purchased local charts here in Nadi that are marginally better than the one you can buy from the UK Admiralty however the one thing that never lies is an overhead photo.

For this we are very lucky that Google and Bing have taken satellite photos however, they are not geo-synched to your GPS so despite now having images that show you where the underwater hazards lie, they do not show you where your boat is at a particular moment in relation to the hazard. Luckily there is a wonderful program for the iPad, Android and Windows called [OvitalMap](#) that does this (free but a little financial support allows faster downloads and more features). Without this program we would not be so confident moving our sailing yacht around these reefs.

OvitalMap allows you to download high resolution images of an area and then shows your GPS location on it (assuming you have an iPad with GPS or a USB GPS for your Windows computer). It doesn't just allow one resolution of the image but, just like Google Earth, you can zoom in many levels to get more and more details. Once downloaded the images stay cached within OvitalMap for use offline. We have an iPad at the helm at all times while on passage.

Art refers to Blue Lagoon in the Yasawas as an area where the charting is out and Ovital helped so we'll use this as a base for comparison. Below we'll take a look at some of the different information sources.

We're looking at Blue Lagoon in the Yasawa's, Fiji. On the left Navionics shows no passage from the eastern side. On the right is the Ovital map clearly showing the reefs.



# CRUISING GUIDES TONGA AND FIJI

Fully interactive Cruising Guides for Tonga and Fiji by Sailsouthpacific.com.

These guides have been kindly offered to rally participants with a 25% discount during the pre-departure week in Opuia. **A direct download to your device is required by the author** John Martin of Sailsouthpacific.com. He will be demonstrating and displaying these apps during the pre-week so if you are considering purchasing them please wait until your arrival in Opuia to take advantage of this special offer.

These fully interactive cruising guides for iPad and Android covers all the main areas and many of the lesser travelled areas. Find out more about the Sail Fiji and Sail Tonga apps from the Apple App Store or Google Play



# CRUISING GUIDES

The cruising guide to Vanuatu is a comprehensive electronic guide to sailing in the Vanuatu islands. The program works on Windows (XP or later) and Macintosh (OSX 10.7 or later) computers.

RETAIL €90.00

**ICNZ discount = 81 euros / \$133 NZD**

Please note: **We must be able to download direct to your PC or Mac from a usb drive.** This will be available to download during the pre-departure week.

**Buy both together: RETAIL 210.00 euros**

**ICNZ discount = 188 euros / \$310 NZD**

The cruising guide to New Caledonia is a comprehensive electronic guide to sailing in New Caledonia's islands. The program works on Windows (XP or later) and Macintosh (OSX 10.7 or later) computers.

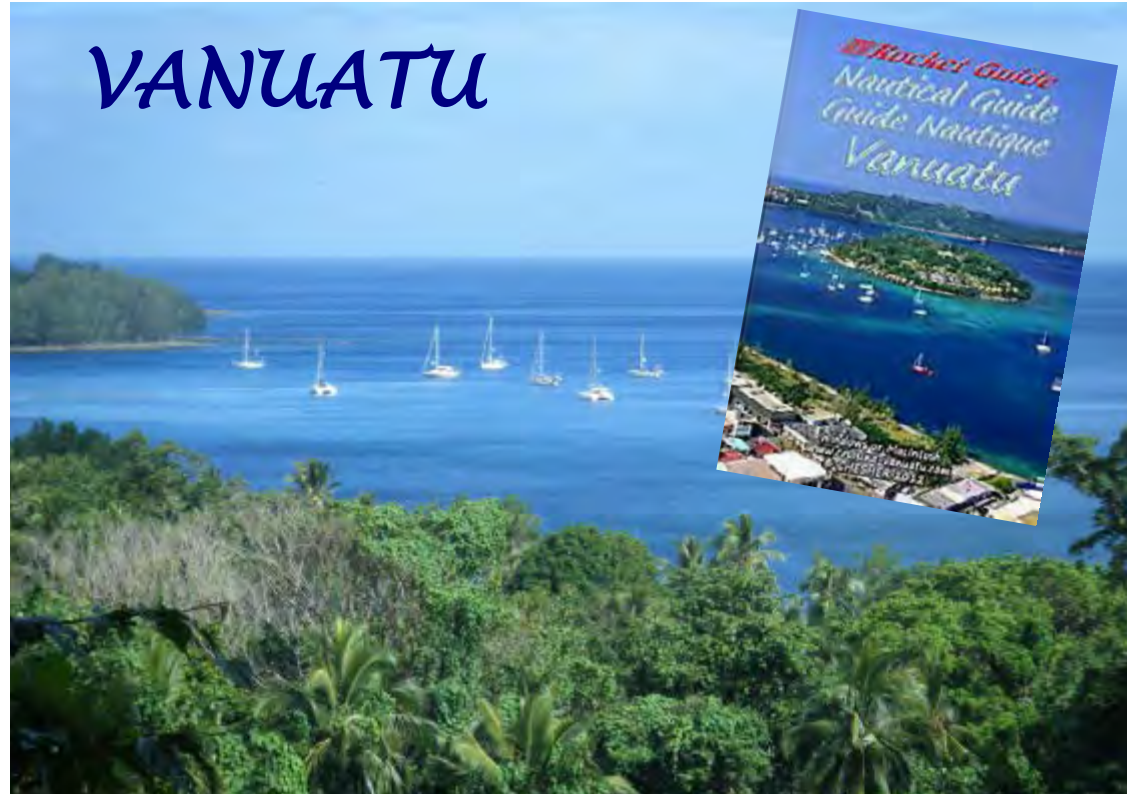
RETAIL €125.00

**ICNZ discount = 112 euros / \$185 NZD**

Please note: **We must be able to download direct to your PC or Mac from a usb drive.** This will be available to download during the pre-departure week.

**Contact us to arrange your download -  
info@islandcruising.nz**

## VANUATU



## NEW CALEDONIA





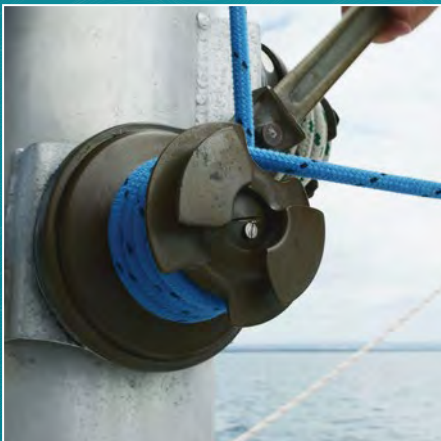
**SEA RESCUE**  
SLED

# Island Cruising NZ deal:

SLED Package usually \$990.00 reduced to \$800.00

## THE SEA RESCUE SLED - HELPING SAVE LIVES AT SEA

A man overboard situation can happen anywhere and at any time - in sheltered water or the open ocean. Make sure you are equipped to manage it.



**For info or orders go to: [www.searescuesled.com](http://www.searescuesled.com)**

Sea Rescue Sled | Contact: Lloyd Valentine

Email: [ahoy@searescuesled.com](mailto:ahoy@searescuesled.com)

# Safety at Sea

Keeping yourself and your crew safe on passage and while cruising is the skippers responsibility and starts with a well found boat, good education and quality safety gear aboard.

There are certain items that are mandatory and others that just make sense. In this article are some of our suggestions from practical experience but a trip down to your safety experts, Safety at Sea is an essential part of your preparation.

**A 10% Discount is available to ICNZ Full Members on certain Safety Gear**

## Life Rafts

This is one item we hope to never use but if we do, are we able to get into it. Remember the old adage, "Climb up into your life raft" believe me if you thought the boat was uncomfortable the Life Raft will be much worse.

### Waypoint Ocean (Container)



- Lightweight
- Made in the UK/EU

### Waypoint Ocean (Valise)



**WAYPOINT**  
L I F E R A F T S

### CSM ISO Offshore (Valise)



- Value for money **CSM**®

## Lights & Headlights

**EXPOSURE**  
LIGHTS

### R.A.W Pro Headlight



### Mirco Lights



## Lifejackets & Harnesses

Although these are two different items they often come combined. Make sure the unit is comfortable and easy to put on, you'll wear it more often if it is.

### Baltic Winner 150 Harness



### Baltic Legend Auto Harness



**BALTIC**  
LIFEJACKETS SWEDEN

### Wichard ProLine Tether



### Wichard Gyb'Easy Boom Brake



## Binoculars

The analog SUUNTO compass can be used both in the northern and southern hemispheres.

**MINOX**

### BN 7x50 C II



## MOB & Recovery

It is essential for CAT 1 to have a rescue system on board. This should not be instead of a lifejacket and buoyancy aid but rather as a complement.

### SOS DanBuoy



### Baltic Foam Recovery Sling



### Baltic Horseshoe Lifebuoy



## EPIRB's

All of our EPRIB's are GPS enabled!

### EPIRB1

### MOB1



**MEOSAR**  
Compatible



  
Safety at Sea

Retail: Safety at Sea  
112 Beaumont Street,  
Westhaven, Auckland New Zealand  
Phone: 0800 809 911  
Email: sales@safetyatsea.co.nz  
www.safetyatsea.co.nz

Service Centre  
Southern Pacific Inflatables, 22  
Oraha Road, Kumeu, Auckland  
New Zealand  
Phone: 09 600 4812  
Email: greg@kiwiyachting.co.nz

 Kiwi  
Yachting

From the Safety At Sea perspective, we have the capacity to supply almost anything your members may require to bring them up to Cat 1 standard preparatory to offshore voyaging. We will apply an ICA NZ discount on certain lines to anyone providing proof of current membership of ICA NZ.

Our product range includes:

- Lifejackets - Kiwi Yachting are the exclusive importers and distributors of Baltic and Secumar lifejackets in New Zealand.
- Tethers
- Safety harnesses
- EPIRBs
- AIS
- PLBs
- SART
- Electronic flares
- Sea Anchors and Drogues – we represent the world-reputed Coppins Sea Anchors
- Liferrafts
- Inflatable craft/tenders – New Zealand manufactured to the highest standards at our factory in West Auckland
- Suzuki Outboards – from 2.5 to 300 HP – we are Suzuki Westhaven
- Hydrogenerators from Watt & Sea
- Medical Kits
- Flares
- And so much more as a tour of our website will highlight: [www.safetyatsea.co.nz](http://www.safetyatsea.co.nz)



**Safety At Sea**  
**Retail Address:**  
**112 Beaumont St, Wynyard Quarter, Auckland 1010**  
**Ph: +64-9-309 9111**

**Service Address:**  
**Southern Pacific Inflatables**  
**Attn: Greg White**  
**22 Orahua Rd, Kumeu, West Auckland 0810**  
**Ph: +64-9-600 4812**

We also service lifejackets and liferafts at our Kumeu Service Centre.

Beyond safety considerations, our parent company represents Wichard, Lewmar, Viper, Oceanair, and a host of other highly reputed brands of yacht and sail fittings and provides rigging services. Kiwi Yachting has close relationships with boat builders and riggers throughout New Zealand

I look forward to hearing from your members, who may be assured of a warm welcome whenever they come into our shop or make contact by email.

**Kenneth Wilson**

**Safety At Sea - Retail Manager**

**Mobile: +64-22 639 1064**

**Email: [sales@safetyatsea.co.nz](mailto:sales@safetyatsea.co.nz)**



## Maritime VHF Radio Operator Certificate

Any person operating a maritime VHF radio must hold, as a minimum requirement, a Maritime VHF Radio Operator Certificate (unless transmitting in an emergency or a distress situation). In addition, all maritime radio communications are required to be positively identified through the use of a [Callsign](#) (and in the case of a VHF DSC radio, an MMSI).

Knowing how to use a maritime VHF radio correctly and with confidence is vital in the event of an emergency. This course covers the protocols that must be followed when communicating over the maritime radio network.

Maritime VHF radios can be used for receiving weather forecasts, safety information, communicating between boats, or communicating boat to shore.

The Maritime VHF Radio Operator Certificate course covers the general features and functions of a maritime VHF radio, correct distress and urgency procedures for 'Mayday' and 'Pan Pan' calls, pro-words and phonetic alphabet, trip reports, weather services, callsigns, EPIRBs and other search and rescue equipment.

## Maritime Restricted Radiotelephone Operator Certificate

The minimum requirement for commercial operators and users of MF/HF (SSB) radio. Covers routine operation, safety, distress & urgency calling and alarm signals. *If you hold an MRROC this covers use of both Single Side Band radio and VHF radio.*

## Maritime VHF Radio Callsigns & MMSI

All radio transmissions must be individually identified. Vessels may be issued with either a VHF or a VHF/SSB\*callsign. In New Zealand, callsigns begin with the letters ZM followed by another letter and 4 numbers. New Zealand registered vessels heading offshore may be recognized through their ZM callsign.

An MMSI is issued by Radio Spectrum Management and is permanently attached to a callsign. They must not be separated.

An MMSI, once entered into a radio transmitter or AIS equipment, is very difficult and often costly to remove, therefore it is highly recommended that the callsign and MMSI remain with the vessel.

It is an offence to use a false MMSI or Callsign for a radio transmission.

Maritime VHF radio callsigns are issued for vessels operating within New Zealand Waters only. New Zealand registered vessels heading offshore may require an individual ships radio license rather than the standard general user radio license.

A callsign & MMSI belongs to a person (the 'holder'). If you purchase a vessel the callsign & MMSI does not automatically transfer with the vessel. Permission must be granted by the person who holds the callsign & MMSI to transfer the callsign to a new holder. Fees apply.

\*Please note if you are applying for a callsign for your Single Side Band Radio (SSB) you will need to contact directly (via phone or email), please do not complete an online application.

For more information: <http://callsigns.co.nz/marine-radio-vhf-ssb-callsign-faqs.htm>

How do I apply for an MMSI number if I already have a callsign allocated?

You will need to contact RSM on 0508 RSM INFO (0508 776-463) or email [info@rsm.govt.nz](mailto:info@rsm.govt.nz) to organise for the allocation of an MMSI number if you already have a callsign allocated.

AIS devices are not registered, however, each requires a unique and official 9-digit Maritime Mobile Service Identity (MMSI) number assigned to the vessel and its owner for it to be operational.